



PIPELINE SPHERES

Product: Spheres

Grouping: Separation and batching

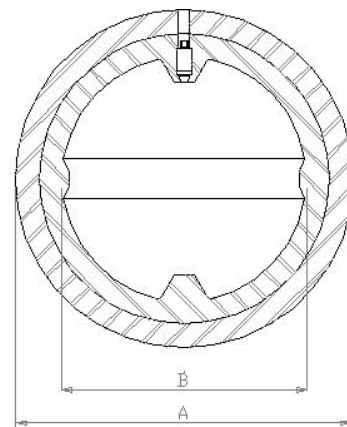
Version: 1.0

NS	Standard		Thin Wall		Thick Wall	
	A	B	A	B	A	B
3"	75.1	53				
4"	99	53			95.3	53
6"	150.8	95	160.9	95	138.3	95
8"	201.2	137.9			190.2	100.5
9"	209.3	137.9				
10"	251.46	181.24			242.4	181.24
12"	304.8	210.8	314.3	210.8	288.4	181.24
14"	337.9	224.6			314.3	210.8
16"	386.6	273.4			361.5	224.6
18"	436.9	306.34			424.3	306.34
20"	485.3	354.6			457.7	306.34
22"	523	354.6				
24"	581.4	422			560.8	422.6
26"	641.2	465				
28"	685	524			660.1	465
30"	741.8	558			704.1	524
32"	785.8	N/a				
34"	836	N/a				
36"	886.4	675			867.5	675

General function and application:

Our range of solid and inflatable spheres is used for product separation, liquid evacuation and in Meter Provers. They are particularly useful as an interface between different grades of product in automatic or remote systems where the spheres are launched under computer control.

Inflatable Sphere



Manufacture

Spheres are moulded as a single seamless unit and available in four grades of polyurethane: Standard, Meter Prover, High Temperature and High Temperature Meter Prover. The two Meter Prover grades are fine tolerance spheres for guaranteed roundness. Spheres are manufactured in a hardness range of 35 to 80 Shore A, determined by the application and internal finish of the pipeline.

Inflatable spheres incorporate an integrated Shraeder valve(s) moulded into the wall of the sphere. The valves are easily removed and replaced. A sealing cap can be fitted to the valve housing to prevent ingress of line pressure into the sphere.

Traverse

Spheres can be used in unidirectional or bi-directional pipelines and will pass most full bore fittings except gate valves. Where the side branch on tees is greater than 25% of the pipeline diameter, the use of a Sphere Flow Tees is recommended.

Configurations

Solid spheres are available in standard sizes between 1½" and 8", and inflatable spheres from 3" to 48". Spheres can be weighted or have magnets embedded and are available in FDA approved polyurethane for Food Industry and in Potable Water Systems.

PETROSYSTEM Srl



Track Record for Spheres

Customers			
Pipeline Owners & Operators		Engineers and Contractors	
ADNOC	Ministry of Defence	AMEC	HIFAB
Amerada Hess	NIOC	AOCI	IPCO
Arab Petroleum	Oil India	Barmac	Mannesman
Associated Octel	Norske Hydro	Bechtel	McAlpine
BP Amoco	ONGC	B G Kershaw	McDermott
British Gas	Pakistan State Oil	Brown and Root	Mothercat
Carless Refining	PDO	Comtech	NOS
Chevron	Phillips	Coflexip	NPCC
Conoco	PPC	Copipe	Punj Lloyd
Dong	SAGA	Comex	Redpath
Esso	Shell	Consolidated Contracts	Rockwater
Fina Elf	Sui Northern Gas	Dodsal	Saipem
Gasum Oy	Sui Southern Gas	EMC	SBM
Gulf Oil	Statoil	Essar	Santa Fe
Japanese Gas Co	Sun Oil	ETPM	Snam
Kanaghaz	Texaco	Fluor Daniel	Stena
Maersk	Total	Halliburton	Thyssen
Marathon	Zadco	HAK	Transocean

Pipeline Engineering is committed to the continual improvements of its products through Research and Design. We therefore retain the right to amend the above details. Please contact Pipeline Engineering direct for the latest specifications.



SPHERE ACCESSORIES



inflation pump

Inflation Pump

The sphere inflation pump is manufactured with a strong polyurethane reservoir and a stainless steel pump unit. It is foot operated, lightweight, rustproof and almost indestructible. The hose fitting will accept the tools needed to inflate all size of sphere.

Diameter type



Diameter Type

The sphere tape measures directly the diameter, both in imperial and metric units, and indicates the amount of inflation



Sizing ring

Sizing Ring

A sphere sizing ring is used where a precise, repeatable diameter is required. Meter prover applications are example of the use for sizing rings. They are manufactured from aluminium alloy.



Valve pressure cap



Sphere lifter

Sphere Lifter

The sphere Lifter is designed to ease the handling problems associated with spheres. The lifter will load and remove spheres from vertical, horizontal and inclined scraper traps. The lifter comprises a vacuum pump and gauge, vacuum cup and lifting loop. The final configuration will depend on the application.



Valve core removal tool



Valve removal tool

Valve Tools

Valve removal tools, sphere valves and pressure caps are all available.



Filing adaptors



Valve plug removal tool

The right to modify design or material is reserved

Visit our web site : www.petrosystem.it